



# WELZEK

## Welzek Technologies

DO BEST & BE PERFECT

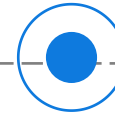
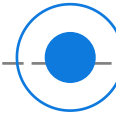
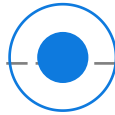
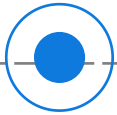
# CONTENT

**01**

PRODUCTS

**03**

APPLICATIONS



PROFILE

**02**

SOLUTIONS

**04**



# WELZEK

PART 1

— • PROFILE • —

DO BEST & BE PERFECT

# PROFILE



**WELZEK**

**Do Best & Be Perfect**

WELZEK is a high-tech enterprise founded in 2014, specializing in the R&D, manufacturing, sales and services of wireless communication testing products.

Welzek has developed a comprehensive product line that encompasses Welzek-branded wireless testers, programmable DC power supplies, and efficient automated wireless testing tools, and offers a full range of testing solutions for customers.

WELZEK owns a CNAS-accredited metrology laboratory. The wireless comprehensive tester T6290F achieves world-class levels in both function and performance indicators.

It collaborates with global chipmakers, wireless ODM providers, mobile brands and manufacturing plants. Its testing solutions are widely deployed and supported across the global supply chains for wireless phones and related products.

**12+ yrs**

Experience

**15000+**

Install base

**CE/RoHS/MET  
KC/FCC/CNAS**

Certified

**Worldwide**

Coverage

# SCOPE



## Products

Radio Signal Tester Series

Precision Measurement DC Power Supply Series

Other Products

**R&D, Manufacturing, Sales & Leasing**



## Services

Product Sales and Leasing

Customized Integration and Testing

After-sales Calibration and Maintenance

**Full Product Lifecycle Management**



## Customers

Core Component and Module Suppliers

Terminal Equipment Manufacturers

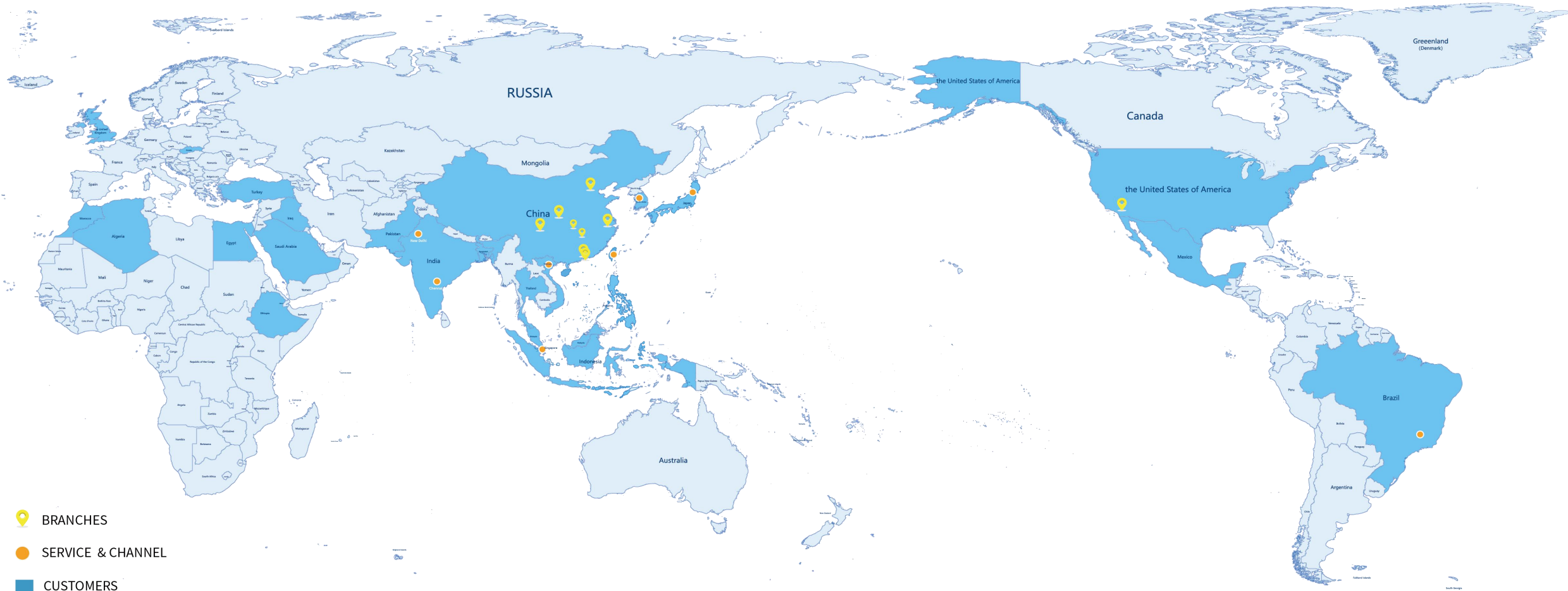
Supply Chain Service and Integration Providers

**End-to-end Chain from R&D to Terminal Application**

# DEVELOPMENT



# GLOBALIZATION



# BRANCHES

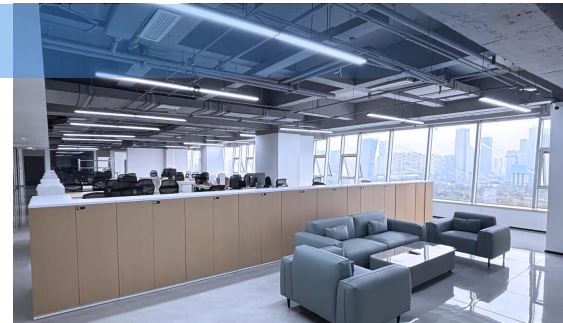
Beijing



United States of America



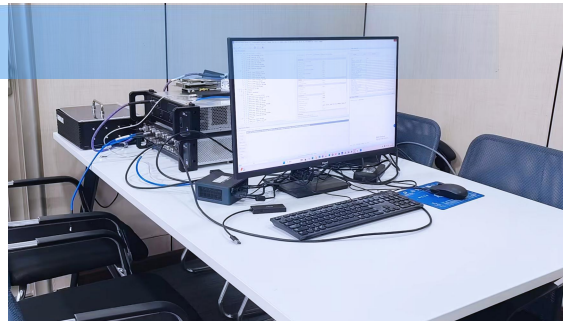
Chengdu



Shenzhen



Xi'an



Suzhou



# BRANCHES

Taiwan



India



Singapore



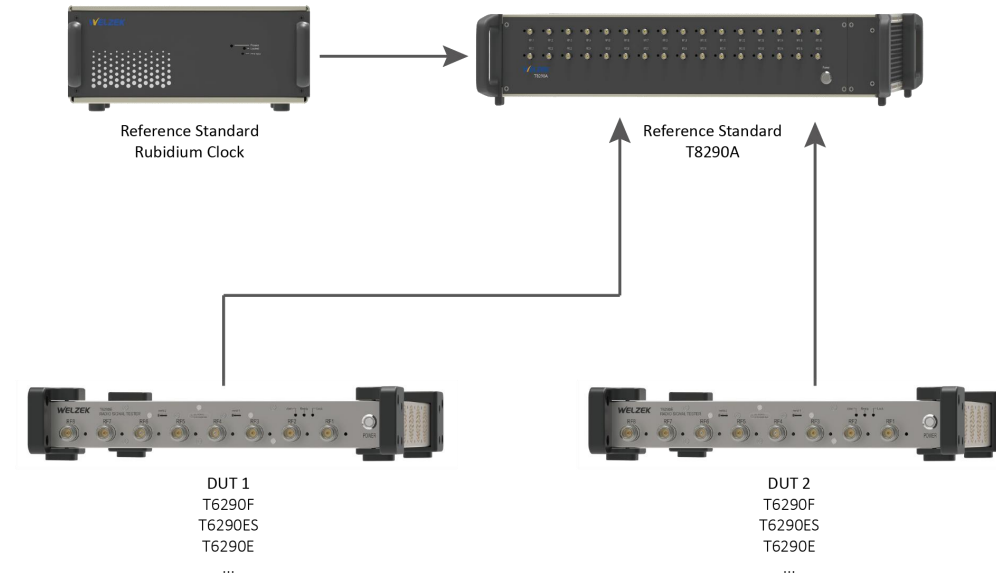
Vietnam

Brazil

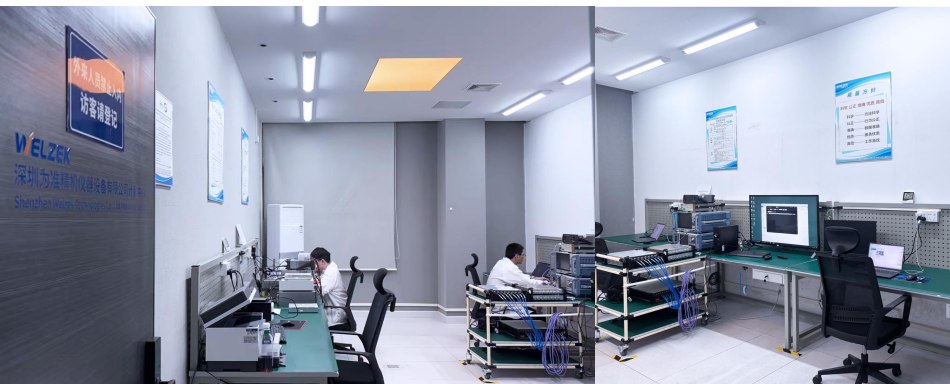
Japan

South Korea

# CNAS



M1000 Calibration System



Certified Calibration and Metering Service Capacity for Radio Signal Tester



Certified Calibration and Metering Service Capacity for Programmable DC Power Supply

# CERTIFICATIONS



fira ABOUT FIRA DISCOVER UWV TECHNOLOGY MEMBERSHIP CERTIFICATIONS RESOURCE HUB DEVICES & DEV TOOLS

Home > Certifications > FiRa Validated Test Tools

## FiRa Validated Test Tools

The Test Tool Validation Process defines the policies, processes and definitions for the validation of test tools that are used to perform certification testing. Only test tools that successfully complete all requirements will be deemed Validated.

Validated Test Tools that can be used for conformance testing include:

| Company Name       | PHY Conformance | Version | Model  |
|--------------------|-----------------|---------|--------|
| Welzek             | PHY Conformance | 3.0     | T6290F |
| support@welzek.com |                 | 4.0     | T6290F |

Fira Consortium



蓝牙开发 会员目录

Home > Develop with Bluetooth > Join the SIG > Member Directory

## 会员目录搜索

Company name  Search

| Company Name                           | Membership Benefits |
|--|---------------------|
| Welzek (Beijing) Technologies Co., Ltd | Adopter             |

Bluetooth SIG



Wi-Fi Alliance Solutions Membership Certification Advocacy & Regulatory News & Events Resources About Us

Home > Member Companies

## Member Companies

Wi-Fi Alliance® worldwide membership is a "Who's Who List" of companies involved in Wi-Fi® technology and services. As an organization, we strive to provide today's Wi-Fi users with high-quality products and services. Together we work in our collaborative environment to ensure that Wi-Fi devices work with each other to deliver the best user experience possible. Our members span the globe and the Wi-Fi industry.

Learn how to become a Wi-Fi Alliance member

**WELZEK**

Welzek Technologies US, Inc.

Wi-Fi Alliance



为准 (北京) 电子科技有限公司, 您好, 欢迎登录星内联盟!

点击上方栏目查看会员专享资料

用户名:

角色: 工作组

姓名: 为准 (北京) 电子科技有限公司

公司名称: 为准 (北京) 电子科技有限公司

Sparklink Alliance

eurofins VERIFICATION OF CONFORMITY

Approved Holder Name: Welzek (Beijing) Technology Co., Ltd.

Approved Holder Address: Room 207, Building 7, No. 18 Jiyuan Rd, Chaoyang Dist, Beijing, The People's Republic of China

Product: Radio Signal Tester

Model: T6290F

Technical Specification: CE 2014 with applicable power supply unit

Brand name: WELZEK

Model No: T6290F

Verification No: 2024010101

Approved By: MET Product Safety & Compliance

CE (European Conformity)

eurofins STATEMENT OF SUPPLIER'S DECLARATION OF CONFORMITY (SDOC)

The holder of the following equipment product: Product: Radio Signal Tester Model: T6290F

Complies with the following standards: FCC of CFR Part 15 Subpart B

Address Reason: FCC of CFR Part 15 Subpart B

Approved By: MET Product Safety & Compliance

FCC Conformity

eurofins TEST REPORT

Report No.: 202401010101-001

Client: WELZEK TECHNOLOGIES CO., LTD.

Address: ROOM 207 BUILDING 7 NO. 18 JIYUAN ROAD CHAOYANG DIST BEIJING THE PEOPLE'S REPUBLIC OF CHINA

Product Description: RADIO SIGNAL TESTER

Tested Item: RADIO SIGNAL TESTER

Tested On: 2024-01-01

Tested By: MET PRODUCT SAFETY & COMPLIANCE

Approved By: MET Product Safety & Compliance

RoHS Compliance

방송통신기자재등의 적합등록 필증 Registration of Broadcasting and Communication Equipment

장르 또는 유형: Radio Signal Tester

모델명: T6290F

제조업체: WELZEK TECHNOLOGIES CO., LTD.

등록번호: 방송통신기자재 적합등록필증

등록일자: 2024-01-01

국립전파연구원 Director General of National Radio Research Agency

KC Compliance Certification (South Korea)

eurofins ENE Certification Record

Product: Radio Signal Tester

Model: T6290F

Approved By: MET Product Safety & Compliance

MET Product Safety & Compliance Certification (USA)



# WELZEK

PART 2

—• PRODUCTS •—

DO BEST & BE PERFECT

# PORTFOLIO

## Radio Signal Tester



T6290D

2015



T6290E

2019



T6290F

2022



T6290M

2023



T8290A

2024

2025

2026

## Programmable DC Power Supply

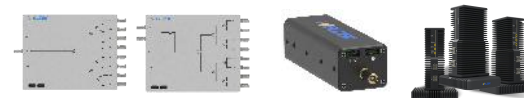


K6206-V20

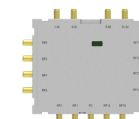


K6206-S

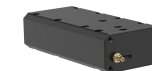
## Other Products



S8U&TDU&mUDC



S-16T



BPM

# RF TESTERS



## T6290E

**RF Ports** 1 channel, 8 TX/RX full duplex ports  
**Frequency Range** 70MHz - 8GHz  
**Signal Bandwidth** 500MHz

## T8290A

**RF Ports** 2 channels, 32 TX/RX full duplex ports  
**Frequency Range** 100MHz - 22GHz  
**Signal Bandwidth** 2GHz

## T6290F

**RF Ports** 2 channels, 8/16 TX/RX full duplex ports  
**Frequency Range** 5MHz - 10GHz  
**Signal Bandwidth** 2GHz

## T6290M

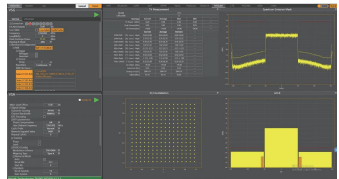
**RF Ports** 2 channels, 4 TX/RX full duplex ports  
**Frequency Range** 18 GHz - 44 GHz  
**Signal Bandwidth** 2GHz

# CAPABILITIES

## Cellular

2/3/4/5G NR  
FR1/FR2/FR3/U6G

- Supports ULCA testing, meets 2–4 GHz uplink band with 400 MHz bandwidth.
- Supports listed & non-listed cellular communication testing.



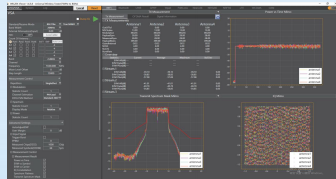
### Test Cases

- ✓ Frequency Error
- ✓ I/Q Origin Offset
- ✓ TX Power
- ✓ Peak Power
- ✓ I/Q Constellation
- ...

## Wi-Fi

WiFi 4/5/6/6e/7/8  
/HaLow/BF

- Single instrument supports 2x2 MIMO; cascading enables 4x4/8x8/16x16 MIMO testing.
- Supports 802.11n/ac/ax/be testing.



### Test Cases

- ✓ Power
- ✓ EVM
- ✓ Sumbol Clock Error
- ✓ LoLeakage
- ✓ IBF
- ...

## UWB

UWB 15.4/15.4z/15.4ab

- Passed FiRa PHY Conformance Certification v1.0–v4.0
- Supports OTA, AOA, TOF testing



### Test Cases

- ✓ BPRF/HPRF Mode
- ✓ Transmitter Packet Format
- ✓ Transmitter PSD Mask
- ✓ Time of Flight
- ✓ Angle of Arrival
- ...

## Bluetooth

Bluetooth BR/EDR/LE/CS/  
HDT(1.x~6.0)

- Supports classic Bluetooth & BLE testing.
- Supports Bluetooth OTA signaling mode, enabling OTA & TRX testing.



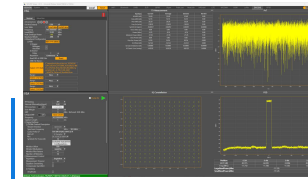
### Test Cases

- ✓ Average Power
- ✓ Freq Drift
- ✓ Freq Stability
- ✓ Receive Sensitivity
- ✓ Stable Phase
- ...

## DOCSIS

DOCSIS 3.1/4.0

- Supports DOCSIS 3.1 & 4.0 testing.
- Supports frequencies up to 75 MHz.



### Test Cases

- ✓ MER
- ✓ DATA MER
- ✓ Pilot MER
- ✓ Spectrum Emission Mask
- ✓ ACP
- ...

## Others

All-mode wireless technology

Wi-SUN  
Zigbee  
Lora  
RFID  
DECT  
NFC  
...

### Test Cases

- ✓ Power
- ✓ Spectrum
- ✓ Waveform Quality Analysis
- ...

# POWER SUPPLIES

Dual-channel high-precision regulated DC output

Programmable output impedance

Supports shutdown & shipping current testing

1U height, compact size

Supports single & dual instrument modes

DVM option



## K6206-V20

Voltage 0~20V

Current 0~5A

Maximum Power 130W

## K6206-S

### K6206-S2005

Voltage 0-20V

Current <math><3V: (1.25 \times \text{Voltage} + 1.25) \text{ A}</math>  
>=3V:5A

Maximum Power 200W

### K6206-S2010

Voltage 0-30V

Current <math><3V: (2.5 \times \text{Voltage} + 2.5) \text{ A}</math>  
>=3V&<=9V:10A  
>9 V&<= 15V: 8 A  
>15V&<= 20 V: 6 A

Maximum Power 240W

### K6206-S3010

Voltage 0-30V

Current <math><3V: (2.5 \times \text{Voltage} + 2.5) \text{ A}</math>  
>=3V&<=9V:10A  
>9 V&<= 15V: 8 A  
>15V&<= 24 V: 6 A  
>24 V&<= 30 V: 5A

Maximum Power 300W

# MORE



## mUDC

RF Converter

### mUDC2008

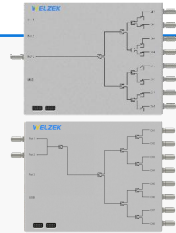
RF Freq. Range  
8GHz-20GHz

### mUDC3124

RF Freq. Range  
24GHz-31GHz

### mUDC5037

RF Freq. Range  
37GHz-50GHz



## S8U-A/B

Adjustable Attenuation  
Power Splitter/Combiner

### S8U-A

8-way power  
splitter/combiner  
with one input/output port

### S8U-B

8-way power  
splitter/combiner  
with two input/output port



## TDU

Time Delay Unit

Frequency Range

6GHz to 10GHz

Input Power

18 dBm

Insertion Loss

<27 dB (type 13~16dB)

VSWR

<1.9



## BPM

Bidirectional Power  
Meter

Frequency Range

10 MHz to 10 GHz

Power Range

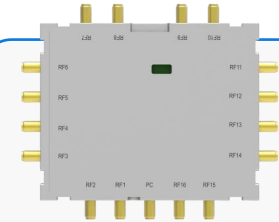
-25 dBm to +15 dBm

Power Out

-15dBm

RF Connector

N male



## S-16T

RF Switch

RF ports

16 independently controllable

Frequency Range

0.05-8GHz

Insertion Loss

<3.0 dB (0.05GHz-2.40GHz)

<4.0 dB (2.40GHz-5.80GHz)

<5.0 dB (5.80GHz-8.00GHz)



# WELZEK

PART 3

—• SOLUTIONS •—

DO BEST & BE PERFECT

# PHONE



Cellular



Wi-Fi



Bluetooth



UWB



Satellite



GNSS



**Cellular Communication Module**

Voice, data, 5G

**Wi-Fi Module**

Wireless connectivity, screen casting, file transfer

**Bluetooth Module**

Connect to headsets, watches, wristbands

**Satellite Communication Module**

Messaging in non-coverage areas

**GNSS Module**

Positioning, navigation

**UWB Module**

AirDrop, device finding

## Recommended Products



T6290E



T6290F

# AUTOMOTIVE



UWB



Cellular



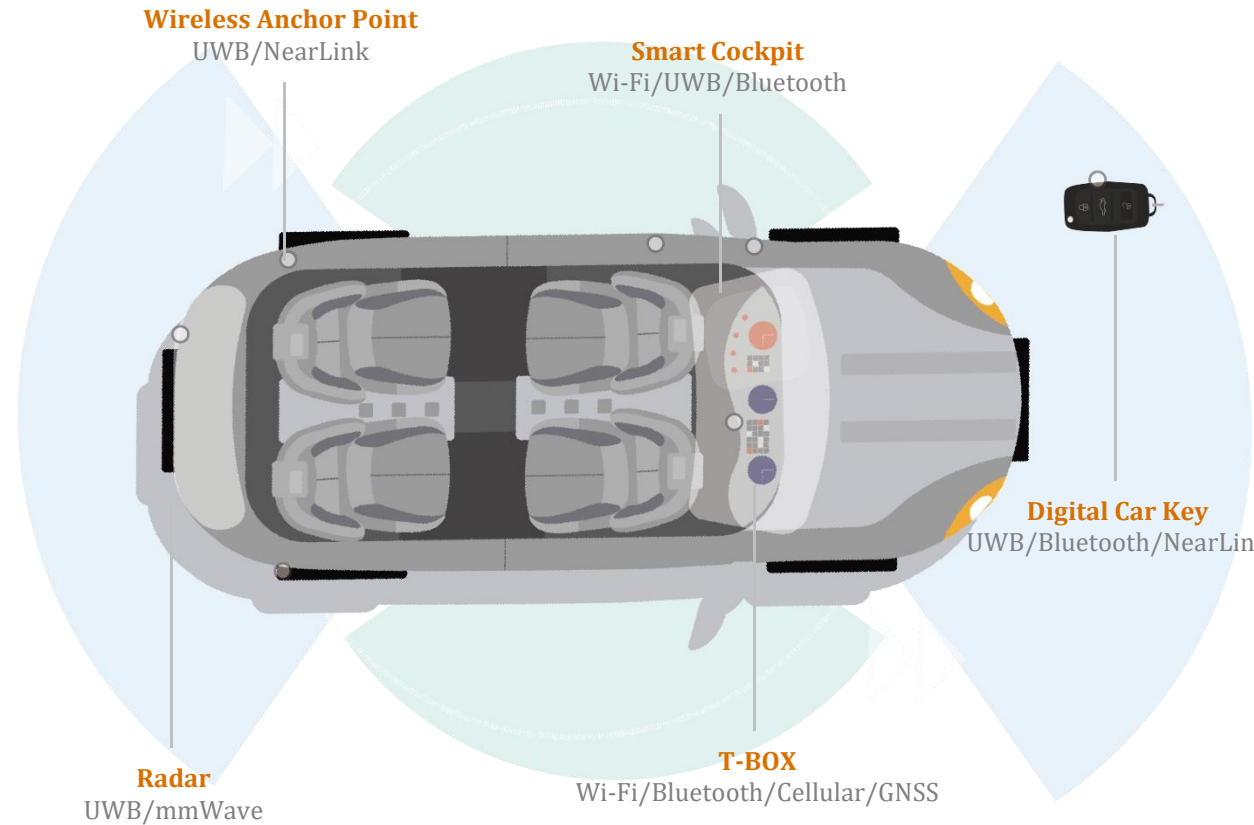
Bluetooth



NearLink



Wi-Fi



## Recommended Products



T6290E



T6290F

Component - Tier 1/Tier 2 Supplier - OEM: Full Industry Chain R&D, Production & Testing Coverage

# SMARTHOME



**UWB**



**Cellular**



**Bluetooth**



**Zigbee**



**Wi-Fi**



## Recommended Products



T6290E



T6290F

# AIOT



UWB



Cellular



Bluetooth



NearLink



Wi-Fi



**Smart Band**  
Bluetooth



**TWS Earphones**  
Bluetooth/NearLink/UWB



**Laptop / Computer**  
Wi-Fi/Bluetooth/UWB/NearLink



**Wireless Mouse & Keyboard**  
Bluetooth/NearLink/UWB



**Tablet**  
Wi-Fi/Bluetooth/Cellular

## Recommended Products



T6290E



T6290F

# AR/VR



**Cellular**



**Wi-Fi**



**Bluetooth**



**UWB**



## Recommended Products



T6290E



T6290F

# POS



**Cellular**



**Wi-Fi**

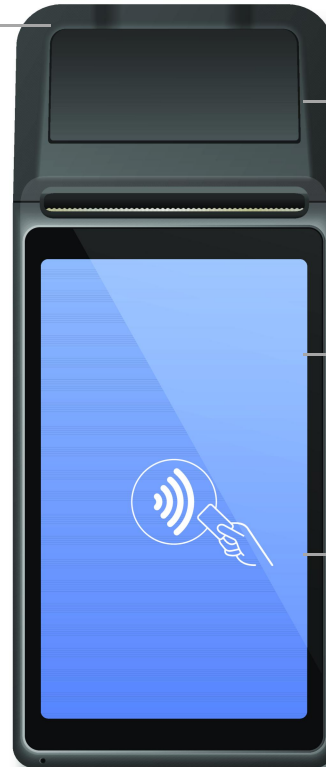


**Bluetooth**



**GNSS**

**2/3/4/5G Modules**  
mobile POS, outdoor checkout, food delivery...



**Bluetooth Modules**  
Connecting Peripherals...

**GNSS  
GPS/Beidou Modules**  
Mobile Payment Collection, Vehicle-mounted POS, Logistics Sign-off...

**Wi-Fi Modules**  
Environments with fixed broadband, such as malls and restaurants...

## Recommended Products



T6290F



K6206-V20

- Meets the voltage and current testing requirements for POS machine R&D and production scenarios.



# WELZEK

## PART 4

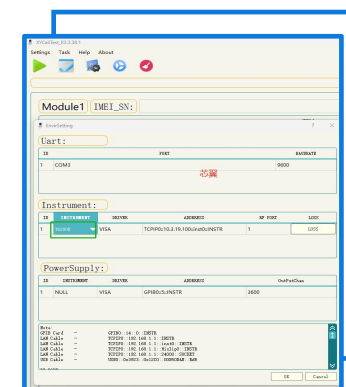
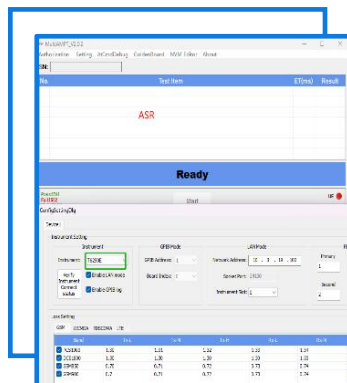
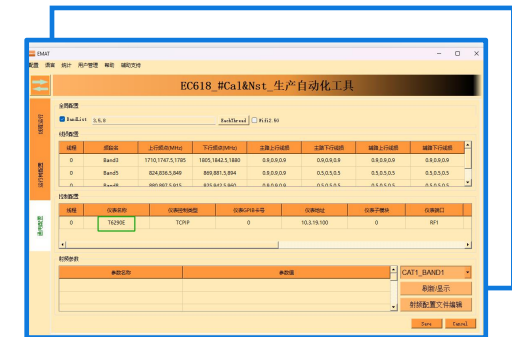
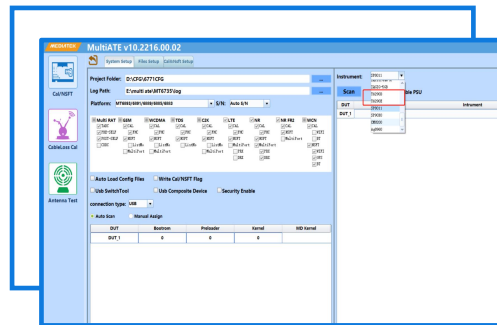
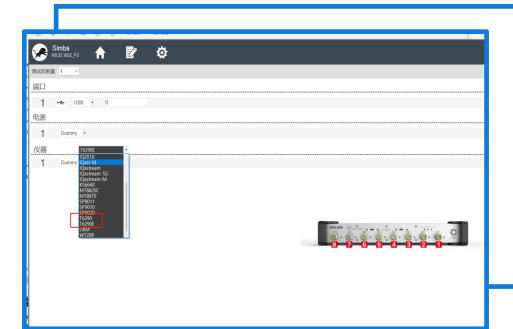
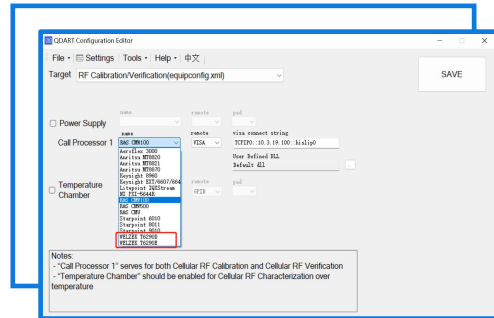
—• APPLICATIONS •—

DO BEST & BE PERFECT

# CELLULAR



Cellular



# CONNECTIVITY

200+ chips

MXCHIP®

iCOMMSEMI

Telink

博流智能  
Buffalo Lab

ULTRACREPTION  
优智联

HISILICON

MEDIATEK

CALTERAH

ZTOP 芯通微

紫光展锐  
UNISOC

SILICON LABS

Techtotop

BEKEN

QORVO

BROADCOM

WUQI

NXP

ST

ALTOBEAM

REALTEK

纽瑞芯科技  
NEWRADIOTECH

百瑞互联  
BARROT

TRD  
创耀科技

炬芯  
Actions

AzureWave

GIANTSEMI

希微科技  
Seek Wave

Qualcomm

BES  
佰世科技

HUGEIC 泰芯半导体

AIC

PHY+

TH

SAMSUNG

# GLOBAL

Covers  
countries & regions  
**30+**

MARQUARDT

SAMSUNG

lenovo

flex

muRata  
INNOVATOR IN ELECTRONICS



Qualcomm

LAVIDI

Emplus

SonimWare



vizmo

NOKIA

LONGCHEER

Transsion 传音

SERCOM



Covers  
countries & regions  
**30+**

TINO

TCL



MitraStar

RIVIAN

Salcomp



Dixon

KOSTAL

EMTECH



NeoLync



DBG

Meta

Google

MAXLINEAR

# Thank You



Welzek Technologies

URL: [en.welzek.com](http://en.welzek.com)

聯和酒店